

## Weather Tools

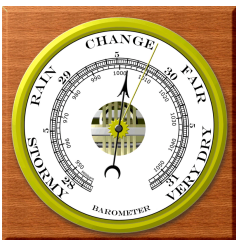
### Thermometer



- used to measure air temperature
- unit: degrees Fahrenheit or degrees Celsius
- how to read: hold the thermometer at eye level. read the temperature to the closest line. record that temperature.

Dec 29-6:22 PM

### Barometer



- used to measure air pressure
- unit: millibars and inches
- how to read: look to see where the arrow is pointing

Over 30.5 inches or 1030 mb	fair weather- sunny skies
29.8-30.5 inches or 1010-1030 mb	change could occur
Under 29.8 inches or 1010 mb	precipitation and storms possible

Dec 29-6:22 PM

## Wind vane



- used to measure the direction the wind is coming from
- unit: cardinal directions ( N, S, E, W, NW, SW, SE, NE)
- how to read: the direction the arrow is pointing is the direction the wind is blowing from

## Anemometer



- used to measure wind speed
- unit: mph or knots
- how to read: hold the anemometer in the air. record the reading.

Dec 29-6:22 PM

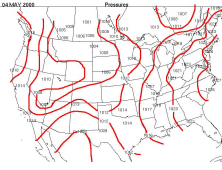
## Psychrometer



- used to measure relative humidity
- percentage of water vapor in the air
- unit: percentage
- how to read:
  - >swing psychrometer in the air.
  - >read the dry bulb temperature.
  - >read the wet bulb temperature.
  - >subtract the wet bulb temperature from the dry bulb temperature. this is called the wet bulb depression.
  - >using the chart, find the dry bulb temperature and the depression. slide your fingers until they meet a percentage.
  - >record that percentage

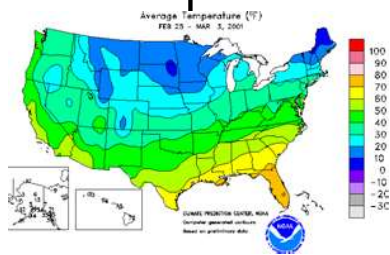
Dec 29-6:22 PM

## Isobars



- line connecting equal points of air pressure
- the closer the isobars are, the higher the wind speed

## Isotherms

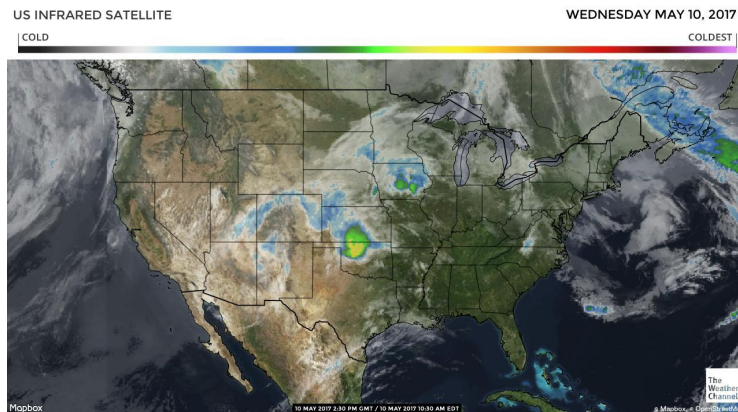


- line connecting equal points of air temperature

Dec 29-6:22 PM

## Satellites

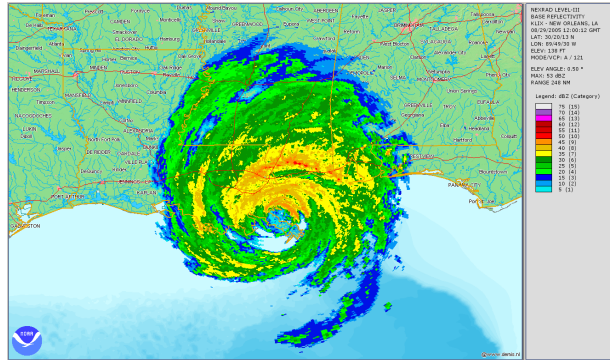
- used for seeing cloud patterns and movements
- Example- hurricane clouds and movement can be observed using satellite images



Dec 29-6:22 PM

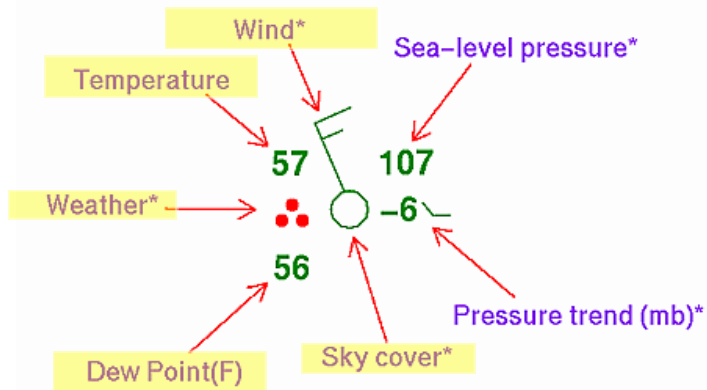
## Radar

- can be used to detect cloud cover, rainfall, storm location or intensity, and cloud movement
- used to detect the potential for severe weather



Dec 29-6:22 PM

## Station Model



Dec 29-6:22 PM