

Storms

Thunderstorm



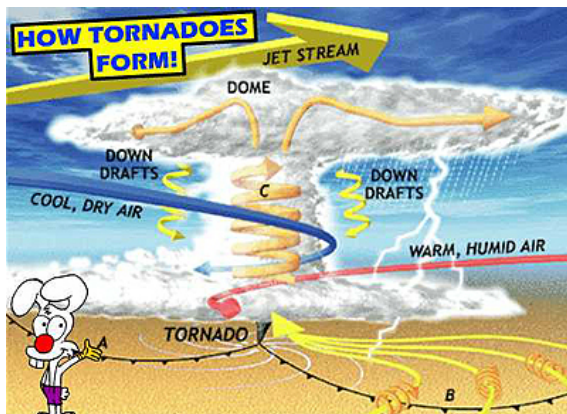
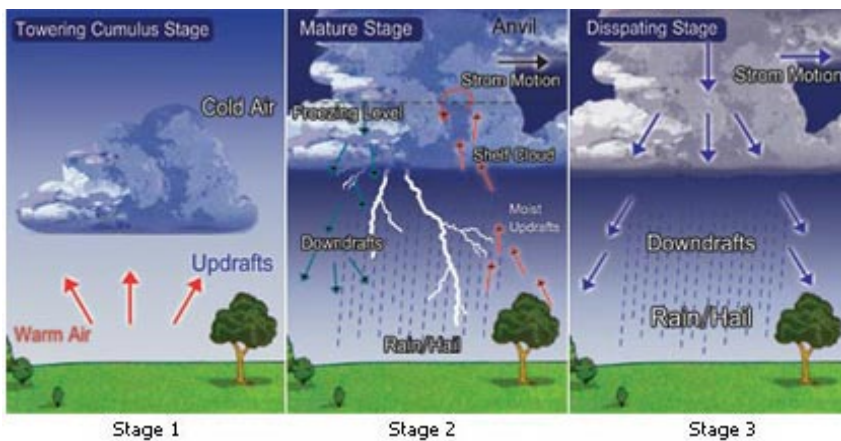
- thunder, lightning, heavy rains and strong winds
- form within large cumulonimbus clouds
- usually form along a cold front but can form within an air mass.

Tornado



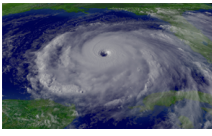
- a rapidly whirling, funnel-shaped cloud that extends down from a storm cloud
- the very low pressure and strong winds can cause great damage to people and property
- are likely to form within the frontal regions where strong thunderstorms are also present.

Dec 29-6:22 PM



Jan 11-10:25 AM

Hurricane



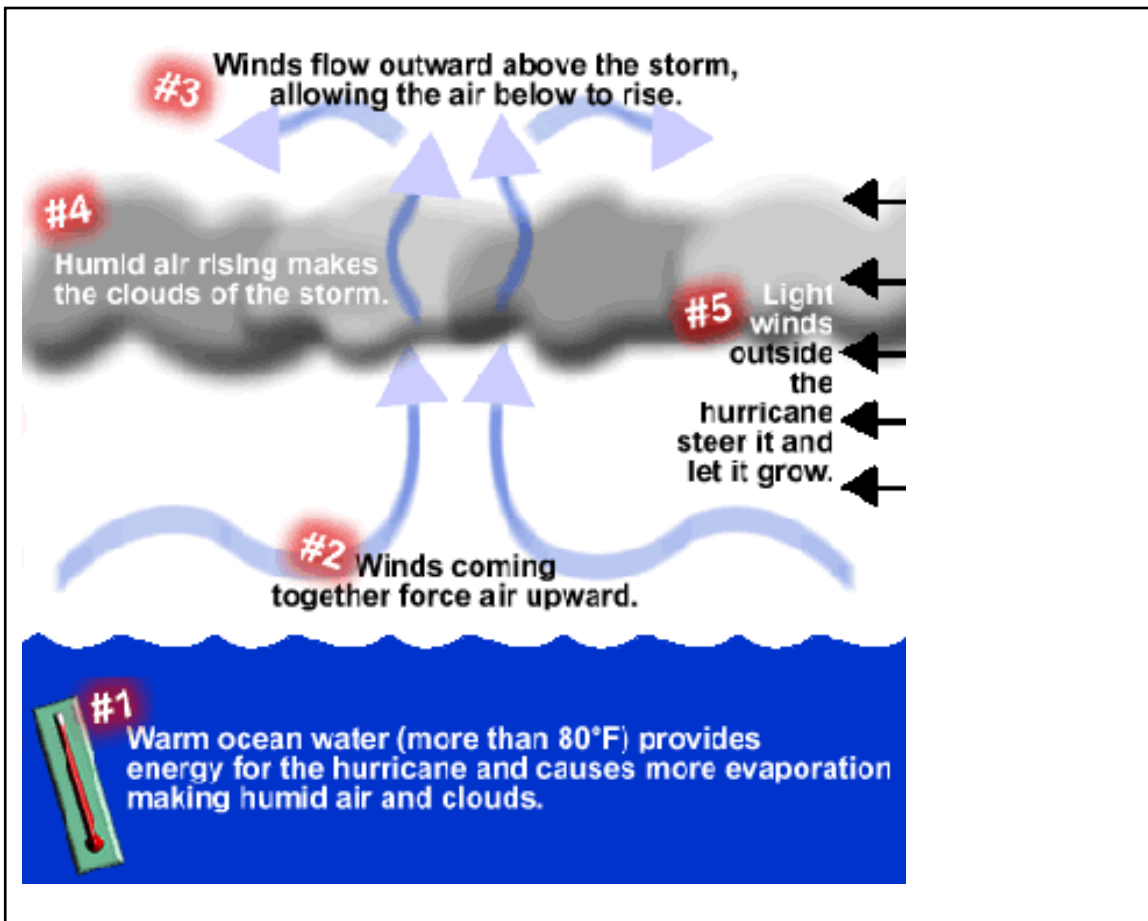
- a low pressure tropical storm that forms over warm ocean water
- winds form a spinning circular pattern around the center, or eye, of the storm
- the lower the air pressure at the center, the faster the winds blow toward the center of the storm
- tropical depression to tropical storm to hurricane

Blizzard

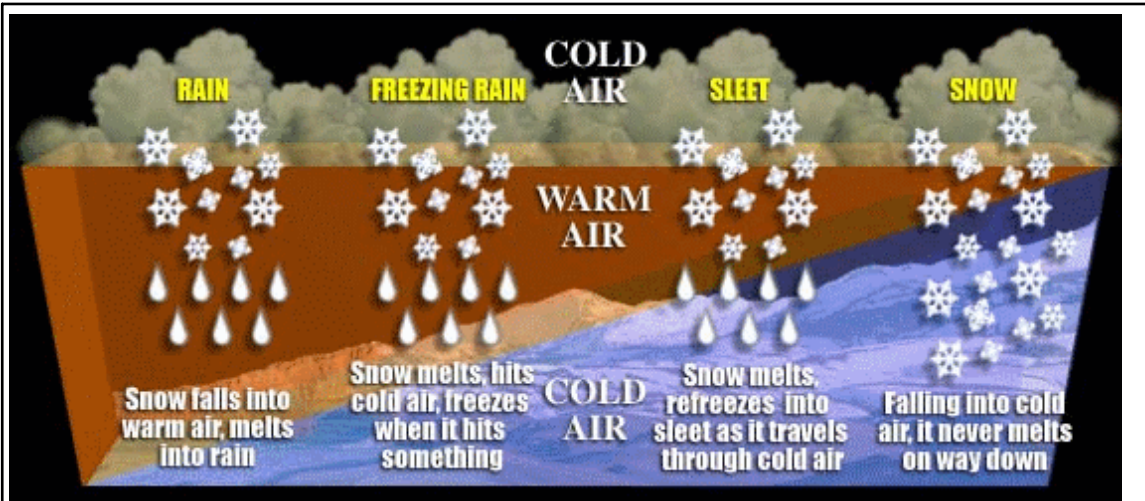


- cold temperatures, high winds, lots of snowfall, has to last at least 3 hours
- form when a cold, dry air mass moves south and meets a warm, wet air mass moving north

Dec 29-6:22 PM



Jan 11-10:31 AM



Jan 11-10:31 AM