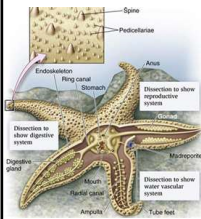


Echinoderms

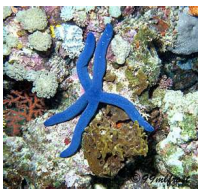
What is it?



- invertebrates with an internal skeleton called an endoskeleton- made of hardened plates
- radial symmetry- multiples of 5
- a system of fluid-filled tubes called a water vascular system allow it to move and breathe
 - tubes squeeze and contract forcing water into tube feet; tube feet become suction cups allowing it to stick
- all live in salt water
- open circulatory system
- reproduce sexually and experience metamorphosis

Mar 11-3:28 PM

Sea stars



Brittle stars



- eat mollusks, crabs and other echinoderms
- use tube feet to capture prey
- forces stomach out of mouth to send chemicals onto prey to break down and digest
- long, slender arms with flexible joints help it slither along the floor
- tube feet have no suction

Mar 11-3:28 PM

Sea
Urchins



- have no arms; use moveable spines all over body
- move using bands of tube feet
- looks like a porcupine
- have teeth-like structure to eat

Sea
cucumbers



- leather-like skin with soft, flexible and muscular bodies
- have rows of tube feet to move
- filter feeder
- looks like a cucumber but in red, brown, blue or green

Mar 11-3:28 PM